

ENDOINJECTOR™

FUEL-INJECTION MIXING SYSTEM FOR ENDOTHERMIC GAS GENERATORS



The EndoInjector™ is a precision gas mixing and control system for endothermic gas generators. The system incorporates a patented fuel injection design that utilizes electronic flow measurement and precise ratio control to consistently provide the ideal gas mixture for high quality endothermic gas generation.

The EndoInjector™ significantly reduces operating costs by eliminating gas waste. The fuel injection design automatically provides gas mixture on demand, providing only as much endothermic gas as your furnaces require. Designed to easily replace existing carburetor/pump designs, the EndoInjector™ typically pays for itself in less than one year.

SYSTEM INCLUDES

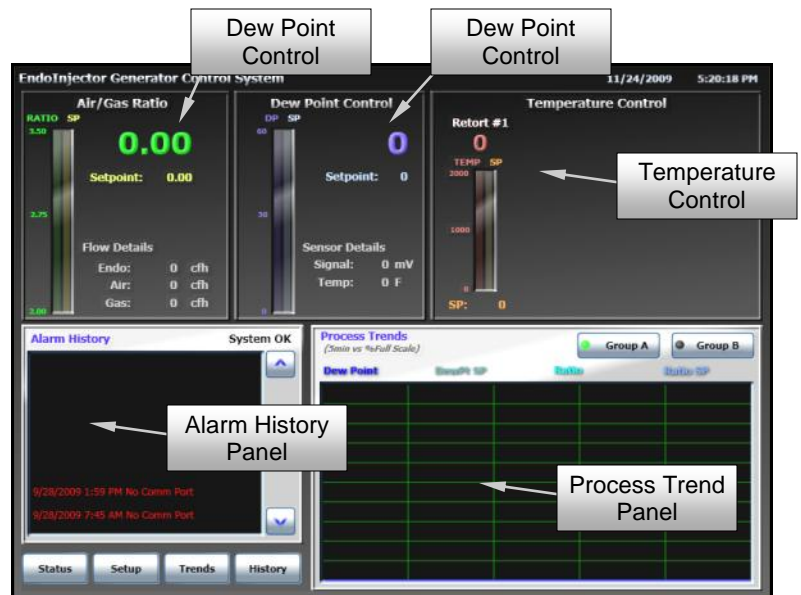
- Full-Color Touch Screen
- Integrated Dew Point Control
- Integrated Temperature Control
- Ratio Controller
- Fuel-Injection Control Valve
- Integrated Paperless Chart Recorder (5+ yr. Data Storage)
- Electronic Air Flow Meter
- Electronic Gas Flow Meter
- Mixing Blower
- Relief Valve
- Air Inlet Filter

SPECIFICATIONS

Control Power 110/220VAC @ 50/60Hz
Blower Power 230/460 VAC 3 Phase
Capacity 100-6000 CFH (Standard)
100 - 14,000 CFH (Extended)
Turndown 5:1 (or greater)
Min Gas Pressure +2.5 psig (Standard)
+0.5 psig (LP Model)
Max Gas Pressure 5 PSIG All Models
Max Operating Temp. 180°F
Communication Ports 232/485/Ethernet
Protocol ModbusRTU
Ports 2" NPT (unless otherwise spec)
Gas Types Propane or Natural Gas

FEATURES & BENEFITS

- Large Turndown Capability
- Reduce Operating Costs
- Touch-Screen Control Interface
- Minimize Generator Setup / Startup Time
- Eliminate Gas Waste
- No Lubrication Required
- Precision Dew Point Control
- Eliminate Sooting of Catalyst due to mistuned carburetors



Document: BL-2870-R1

“INTEGRATED FLOW CONTROL SOLUTIONS”

414-331-2457 / SALES@ATMOSENG.COM / WWW.ATMOSENG.COM

